



Converting Technology s.r.l.

Sede Legale: via dell'Industria 19 37012 BUSSOLENGO (VR) – ITALY –
Tel.+39 045 7156986 – Fax +39 045 6717646
Cod.Fisc.- P.IVA 03255780235 – C.C.I.A.A. Verona - 321607
www.convertingtechnology.com – info@convertingtechnology.com

BATTENFELD GLOUCESTER ENGINEERING & CONVERTING TECHNOLOGY

Announces (3) Series Of Flexographic Printing Presses Available To Customers

Battenfeld Gloucester Engineering and Converting Technology has available the FLEXOELITE series, the FLEXOMASTER series, and the FLEXMATE series printing presses. Each series machine is designed to provide the customer with the ability to print to the quality and speed requirements they require, and to provide a robust design to ensure the printing presses perform to a high level of reliability for an extended time.

FLEXOMATE:

- Is a Stack printing deck design machine that can be designed to run in-line with extrusion, bag makers, other types of upstream machinery, or as a roll to roll machine.
- The machine is available with 2 to 10 color decks.
- It is designed to run production equal to the upstream components (500 FPM) or up to 1,200 FPM as a roll to roll machine
- The frames of the print station area are made of fabricated steel to increase rigidity and stability to the print decks
- There are two different print decks offered on this machine both have Horizontal and sequential deck movement to increase the accuracy of the throw off/on sequence.
 1. The conventional print deck with 360 degree register control
 2. A print deck design closely related to those commonly found on Central Impression Presses to increase register control and to allow for automation features such as racking in and out the print deck, and side and longitudinal register control.
- The doctor blade chamber system is a Quick-Change, Tool-less Carbon fiber system and is (3) times lighter and (3) times stronger than aluminum systems.
- The Drying System is a specially designed high efficiency drying system which allows for better drying capabilities and faster production. It is available gas or electric heating systems. There is an intake air plenum on one side of the machine and an exhaust plenum on the other to increase air flow and drying capabilities.
- The units can be supplied to run downstream to Central Impression presses.
- The FLEXOMATE series is available up to 10-colors and maximum repeats of 32, 41, and 51 inches
- Specially designed UV or EB systems are also available.
- The standard model machine is supplied as a gear type machine with a main motor and mechanical drive transmission connecting each print deck.
- Optional Gear-less design stack presses can be provided.

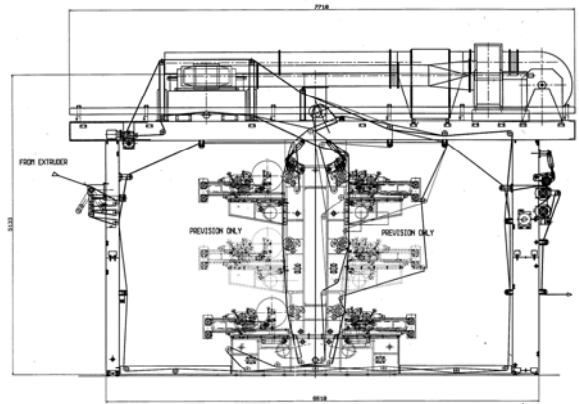
For further information follow the directions on the website or contact Gary Anderson at the below telephone or E-mail address.



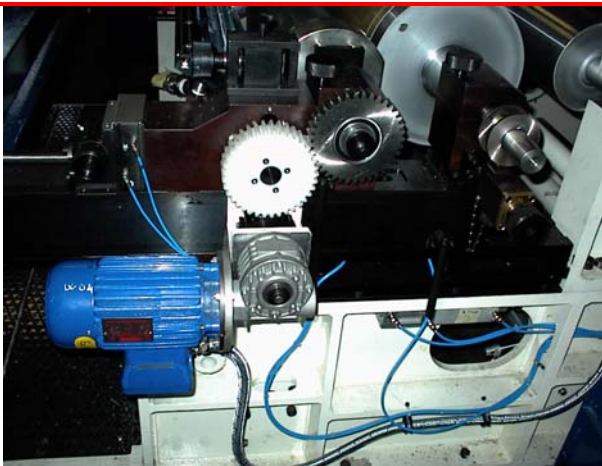
BATTENFELD GLOUCESTER/ CONVERTING TECHNOLOGY FLEXOELITE



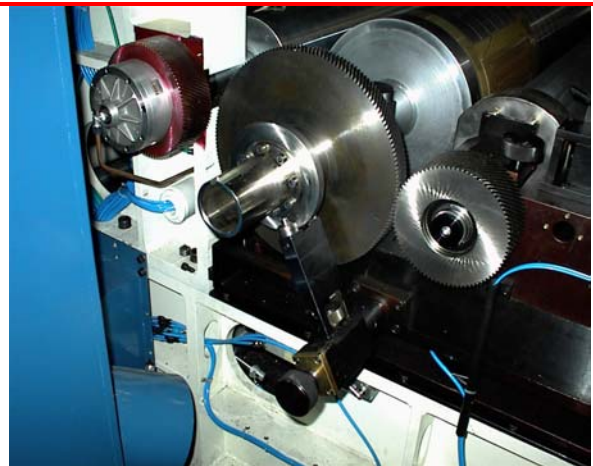
4 colors on 6-color frame



Web Threading Diagram



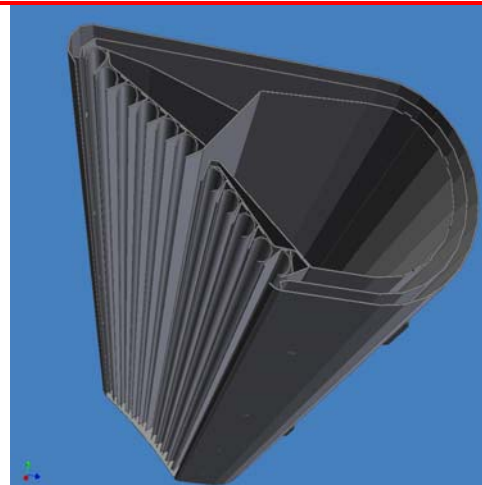
Heavy Duty Design



Heavy Duty Design



Tool-less Quick Change Doctor Blade Chamber



High Efficiency Dryer Boxes