



## **BATTENFELD GLOUCESTER ENGINEERING & CONVERTING TECHNOLOGY**

### **Announces (3) Series Of Flexographic Printing Presses Available To Customers**

Battenfeld Gloucester Engineering and Converting Technology has available the FLEXOELITE series, the FLEXOMASTER series, and the FLEXMATE series printing presses. Each series machine is designed to provide the customer with the ability to print to the quality and speed requirements they require, and to provide a robust design to ensure the printing presses perform to a high level of reliability for an extended time.

#### **FLEXOMASTER:**

- Is a Gear-less Quick-Change Central Impression Flexographic printing press designed to run production up to 1,200 FPM
- The frames of the print station area are made of fabricated steel frame to increase rigidity and stability to the print decks
- The Print / Anilox Sleeve Change System allows the Operator to rapidly change the print and anilox sleeves without manually removing or unfastening any print deck components.
- PROFIBUS, CANBUS and FIBER-OPTICS are used in communicating to the system computer, the drives, and the motors to increase signal quality and speed, and to reduce the amount of redundant wiring normally used in printing presses. The print stations are plug and play design and all areas within explosion proof regulations are purged to meet regulations.
- The doctor blade system is a Quick-Change, Tool-less Carbon fiber system and is (3) times lighter and (3) times stronger than aluminum systems. The pressure of the chamber is pneumatic to ensure proper pressure on the blade material.
- The Drying System is a specially designed high efficiency drying system which allows for better drying capabilities and faster production.
- The pre-registration is automatic and controlled by the computer system and a specially designed video system which communicates directly with the print station drives and makes automatic register corrections in both set-up and during production without operator's intervention. This system is in addition to any video system a customer would normally purchase.
- The series is available with Turret Unwinders and Rewinders, automatic flying splice, and either 32" or 40" diameter rolls, or Shaft-less design Turret Unwinders and Rewinders, automatic flying splice and 40" diameter rolls.
- Available is a complete wash-up system that allows the operator to wash one or all print decks at the same time.
- The FLEXOMASTER series is available in 8 and 10 color versions, 32, 41, and 51 inch maximum repeats.
- All downstream requirements such as printers and coaters are available.
- Specially designed UV or EB systems are also available.

For further information follow the directions on the website or contact Gary Anderson at the below telephone or E-mail address.



## BATTENFELD GLOUCESTER/ CONVERTING TECHNOLOGY FLEXPOLITE

Shown Below Is A 65 Inch Wide 10-Color Gear-Less, Quick Change Print & Anilox Roll Sleeve Change System



10-Color Gear-Less Sleeve Change Machine



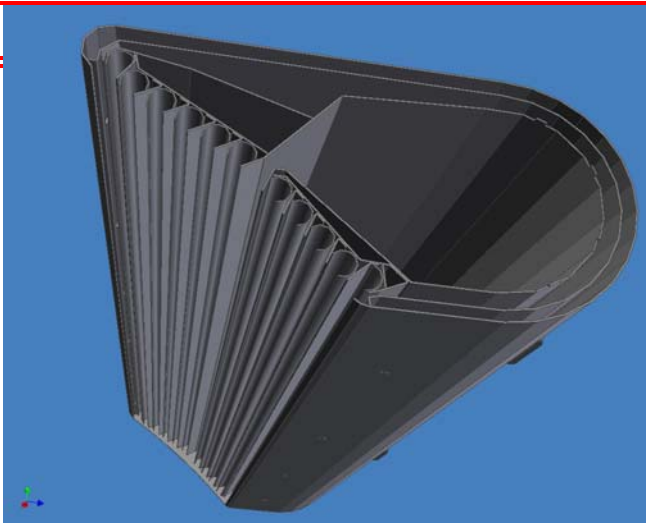
8-Color Gear-Less Sleeve Machine 40" Repeat



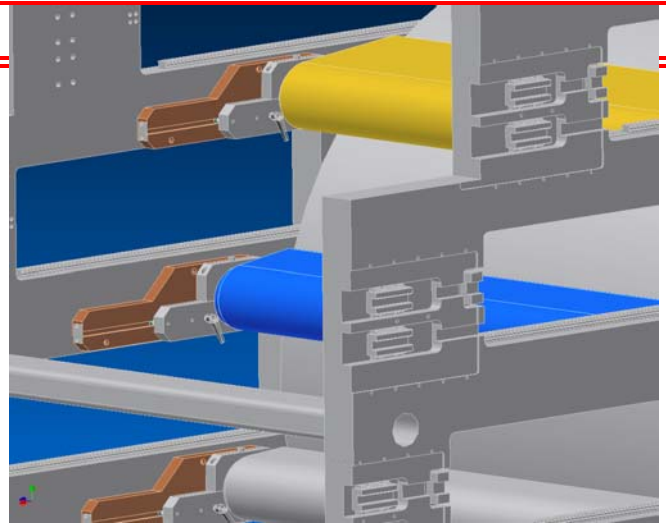
4-AC Motor And Ball Screw Design Deck Movement



Quick Change Carbon Fiber Doctor Blade Chamber



Between Color Drying box design



100-less Between Color dryer box removal